

INVEST IN VACATION MODE

P A L M
B E A C H
T O W E R S

Welcome to
PALM BEACH LIVING
WHERE OPPORTUNITY KNOCKS

NAKHEEL

P A L M
B E A C H
T O W E R S

Palm Beach Towers 3 is an amalgam of style and luxury that inspires a fresh perspective; where each day the sounds of the waves are the backdrop to a life immersed in the best the city has to offer.





INVEST IN PALM BEACH LIVING

Both facets of the city, its energetic pulse and the relaxed vibe, come together in perfect harmony at Palm Beach Towers, making exceptional the norm. From unmissable experiences to the stunning views, every moment is lit by the beauty of the sun and the sand.



NOT JUST A HOME, A HOLIDAY HOME.

Palm Beach Towers 3 is designed to be not just a home, but a holiday home too.

When you're living with the beach outside your door, the finest luxuries inside, incredible views all around, and restaurant a lift ride away, it feels like your life is one long holiday.



EXPLORE
PALM BEACH LIVING

Every home in Palm Beach Towers 3 is the epitome of understated luxury, fully-furnished by world-renowned designers B&B Italia or equivalent who add their signature innovative and iconic style to every corner. Illuminated by sunlight streaming in from every side, their timeless touches elevate every room to the exceptional, making every moment indoors nothing but perfect.







Kitchens

Crafted in meticulous detail with high-quality fittings and finishes, the kitchen is more than a place for cooking; it's a place where time can fly while enjoying quality time with loved ones.



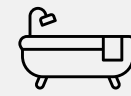
Living & Dining Rooms

Airy and expansive, the stylish and contemporary fixtures and furnishings.



Bedrooms

Each morning starts with natural light flooding in to rejuvenate the senses, with the exceptional furnishings setting the tone for whatever the rest of the day has to offer.



Bathrooms

World-class fixtures and stunning finishes create immaculate spaces that are utilitarian yet welcoming, transforming simple bathroom spaces into elegance personified.



A close-up photograph of a woman with long, wavy reddish-brown hair, wearing a blue button-down shirt. She is holding a white ceramic mug with a silver base with both hands. She is looking out of a window to her left with a thoughtful and slightly smiling expression. The background is blurred, showing what appears to be an office or indoor setting with a window and some equipment. The text "INSPIRING A FRESH PERSPECTIVE" is overlaid in white, bold, sans-serif capital letters across the center of the image, with a white horizontal line underneath the words "A FRESH PERSPECTIVE".

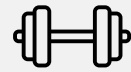
INSPIRING
A FRESH PERSPECTIVE

ELEVATED BEACHSIDE LIVING

Inspired amenities that enhance the ordinary, adding a sense of wonder and energy to everyday life; from a wide range of retail options and basic amenities to cafes and luxurious lounges. Nurture the body and mind to make them the best they can be; from the state-of-the-art gym and serenity of the yoga area to world-class spa facilities.



Outdoor Yoga Area



Indoor Gym



Spa



Viewing Deck



Business Center



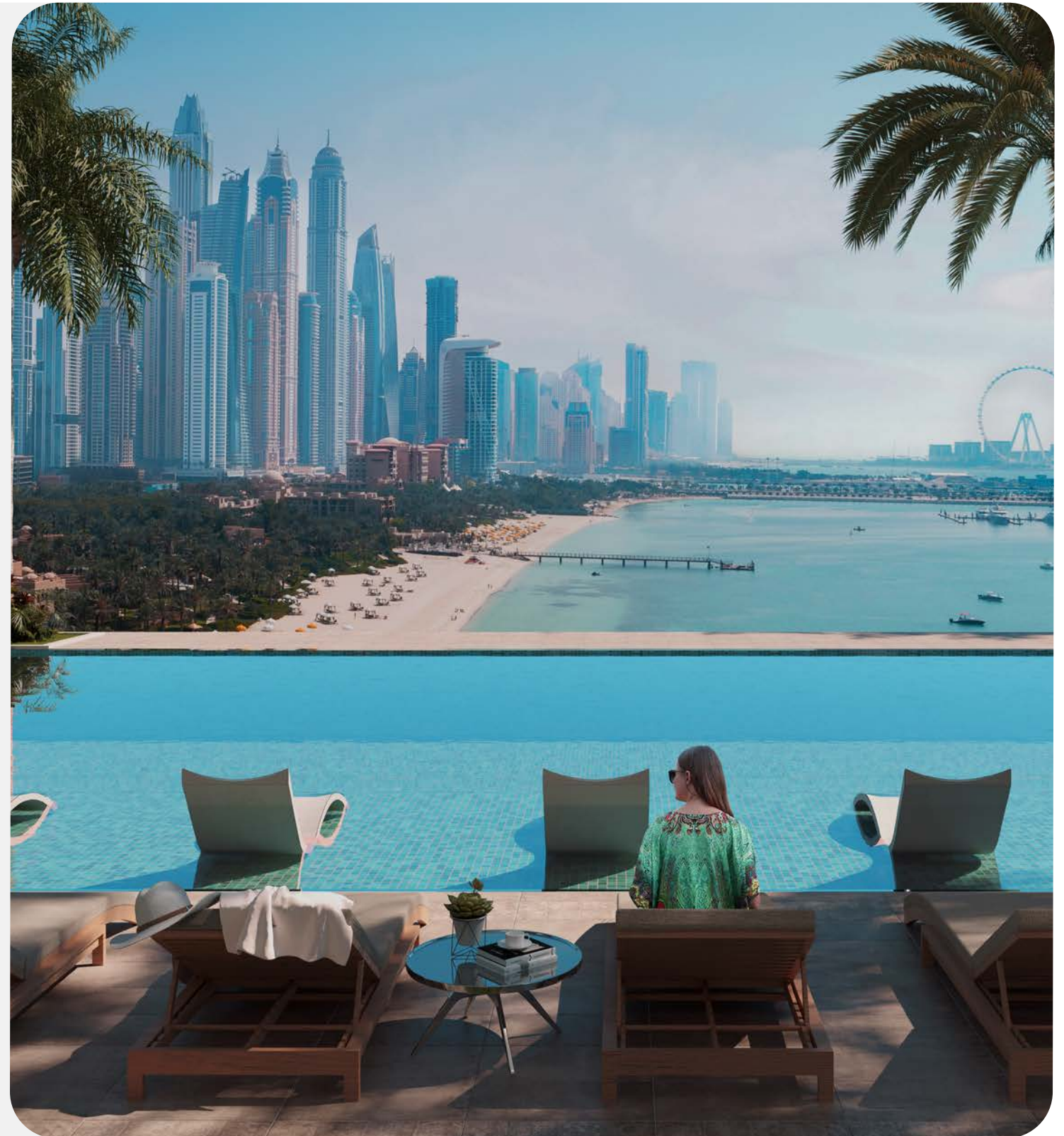
Sky Lounge

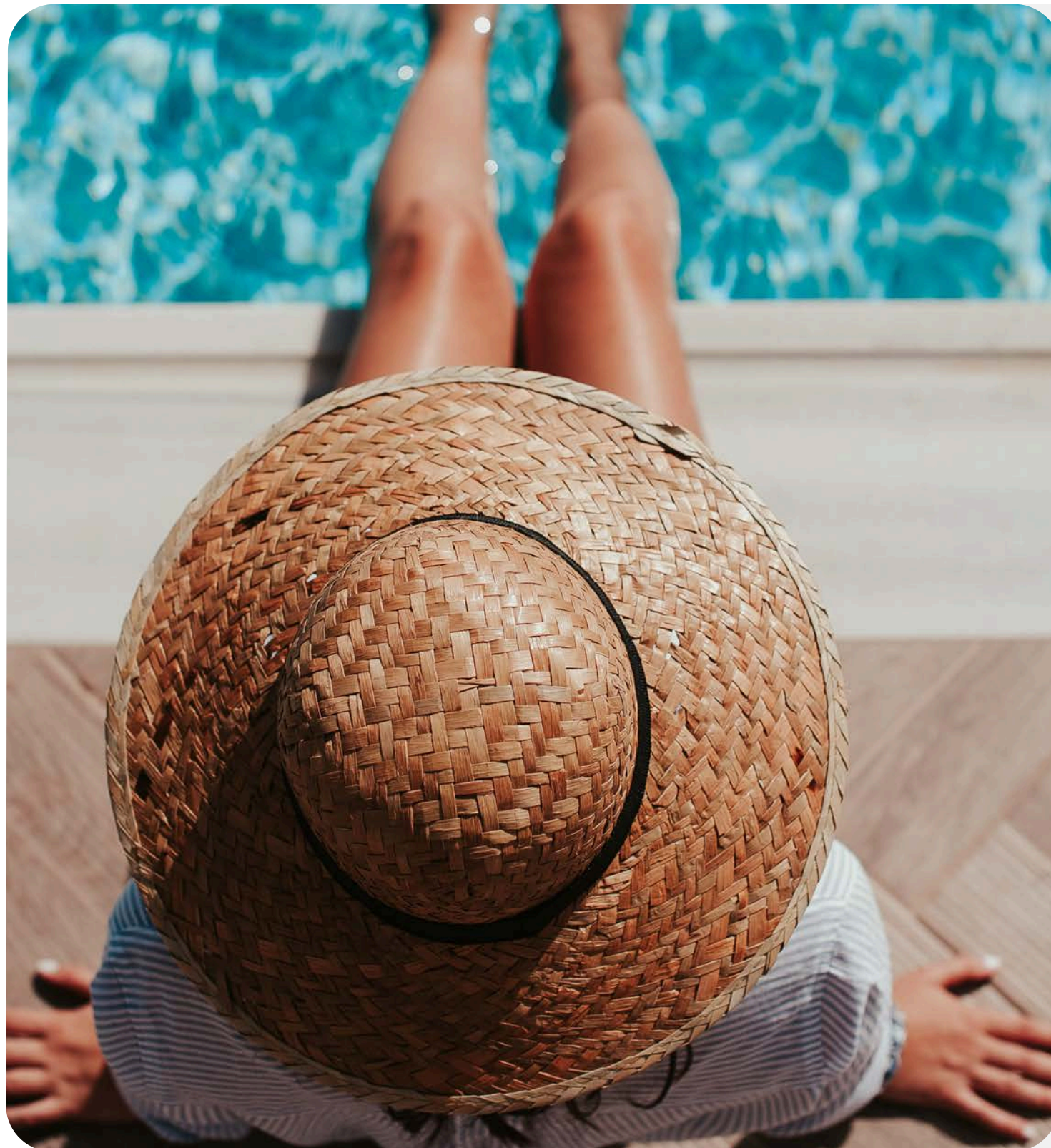


Rooftop Residential Lounge



Rooftop Restaurant with Viewing Gallery





THE WATER'S NEVER TOO FAR AWAY

Access to a plethora of water features steeps the mind in peace and tranquility; from a luxurious outdoor infinity swimming pool that meets the horizon to private beach access for uninterrupted moments in the sun.



Kids Pool



Adult Swimming Pool



Boat jetty



Private beach access



360° infinity
swimming pool



Waterfront park
and promenade



Business centre



Multi-functional room



Kid's play room

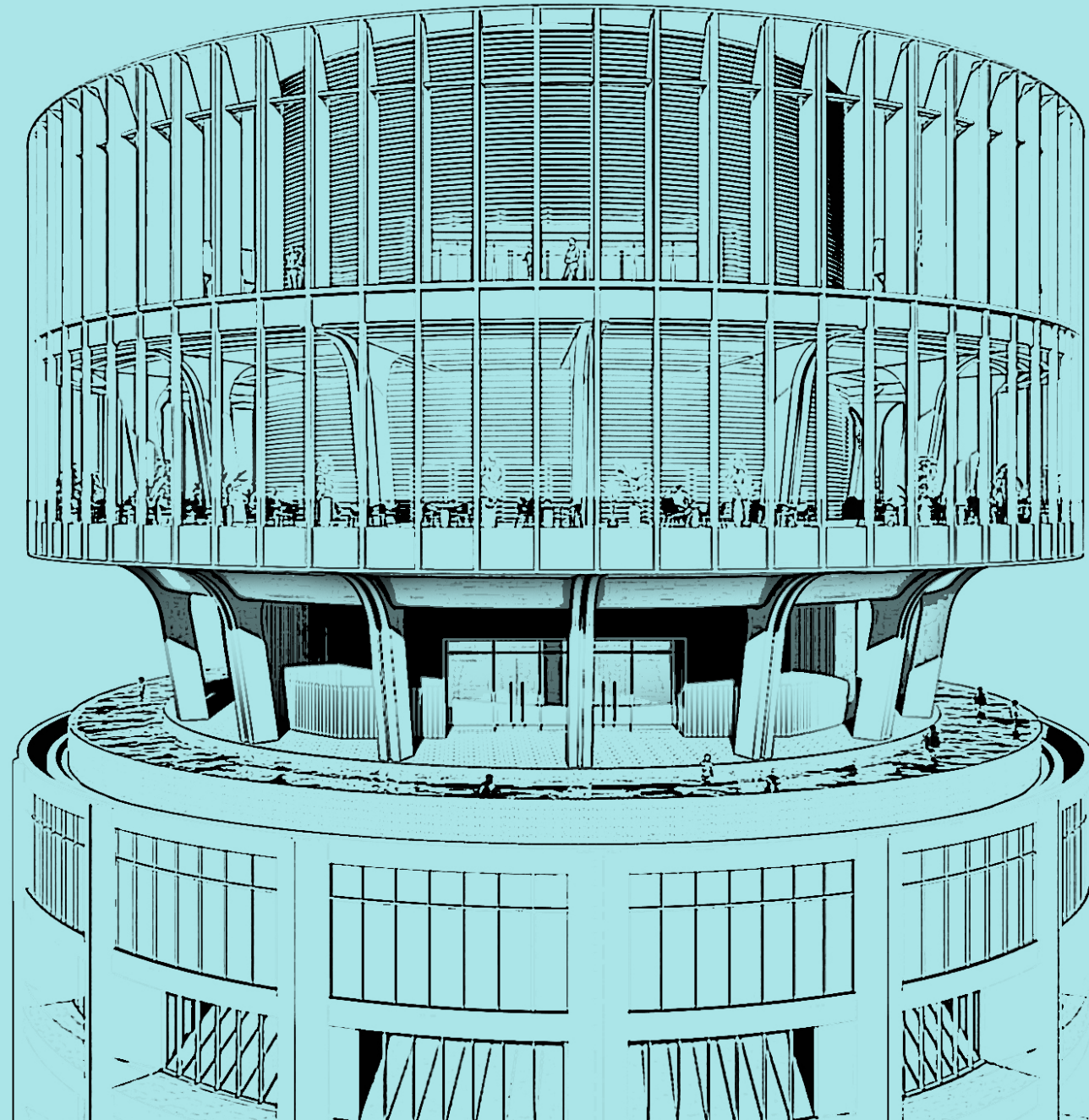
THE CROWN

Soak in the 360-degree Infinity view from the rooftop viewing gallery, the restaurant or pool level and enjoy the horizons of Dubai from all angles.

View Gallery

Pool Level

Penthouses



Restaurants



Outdoor pool

THE EXCEPTIONAL IS ALWAYS AROUND THE CORNER

The Palm Beach Towers are located at the entrance of Palm Jumeirah, right in the middle of one the most exciting and vibrant areas of the city. This offers the freedom to do whatever the mood strikes, from taking a sunny stroll to eating at some of the most renowned restaurants or spending a day shopping at luxury retail brands. The location is also connected to the entire city with both tram and monorail access, making it easy to take in unmissable experiences across the city, no matter where they may be.

Dining & Entertainment

- 1 Atlantis, The Palm
- 2 WHITE Beach Dubai
- 3 Social District
- 4 Nakheel Mall
- 5 Palm West Beach
- 6 Club Vista Marie
- 7 The Pointe
- 8 The View
- 9 St. Regis

Experiences

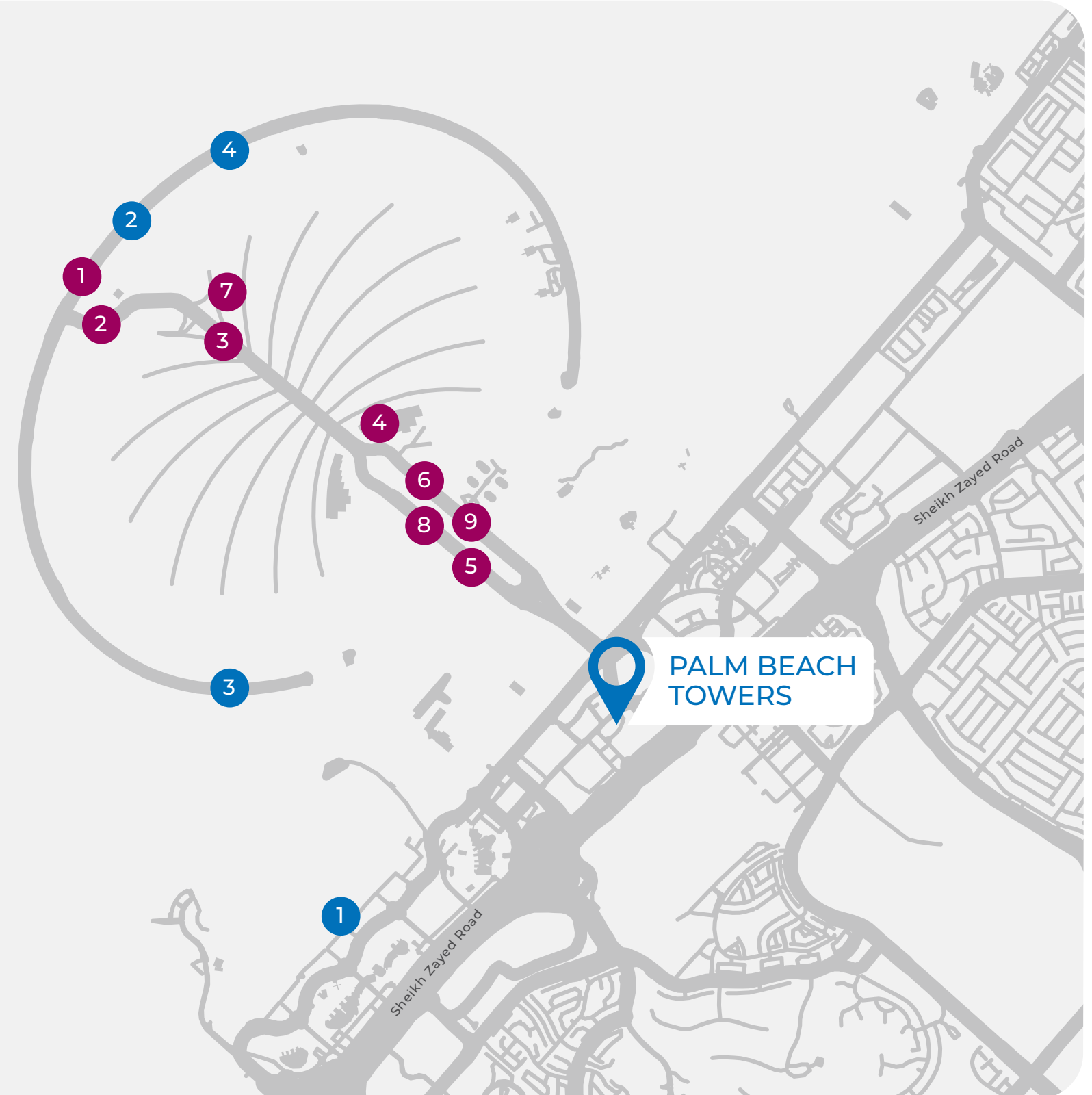
- 1 Marina Beach
- 2 Aquaventure Water Park
- 3 Palm Jumeirah Corniche
- 4 Dolphin Bay

Convenience

Supermarkets

Tram Access

Metro Access





COME INVEST IN VACATION MODE  AT PALM BEACH

P A L M
B E A C H
T O W E R S

NAKHEEL

call 800 Nakheel or visit
Nakheel.com / palmbeachtowers.com

The developer reserves the right to make revisions. All measurements and drawings are approximate. This information is subject to change without notice. Scale drawings, artistic renderings, landscaping and images are for illustrative purposes only and are subject to change without notice.